

## Precision in Every Pattern



**LUXE**  
Series

[www.keosurfaces.com](http://www.keosurfaces.com)

**KEO GLOBAL INDUSTRIES LLP**

Sr. No. 398/1, 399/2, 399/3, 8-A National Highway, Haripar Kerala Road,  
Nava Sadulka, Morbi 363642 Gujarat, INDIA

Call: +91 99799 92236, Mail: [info@keosurfaces.com](mailto:info@keosurfaces.com), Web: [www.keosurfaces.com](http://www.keosurfaces.com)

GROWING TOWARDS



A BRIGHT FUTURE

[www.keosurfaces.com](http://www.keosurfaces.com)

**KEO**<sup>®</sup>  
SURFACES

**LUXE**  
Series



## **SURFACES SHAPE OUR ECOSYSTEM INTO A LIVEABLE ONE.**

Since decades ago, when we first established a name for ourselves in building material industry producing top-notch goods and services, our company has come a long way. KEO Surfaces coalesces artistry and innovation to produce exquisitely crafted SPC flooring solutions that look and feel authentic. Our name, which translates from French as "superior, extraordinary, and precious," perfectly encapsulates who we are and what we stand for. By utilising cutting-edge technology and unmatched expertise, we strive to offer our customers the finest flooring solutions. We offer sustainable flooring solutions with excellent quality and long-lasting durability, backed by the substantial knowledge and experience we have gained through our prior endeavours.

**KEO**<sup>®</sup>  
SURFACES







## SURFACES ARE MOULDED WITH THE FORCE OF NATURE.

Diligence is an inherent feature of KEO Surfaces. We strive to deliver a melange of strength, craftsmanship, and size that delivers function benefits as per the requirements of Spaces. Our manufacturing facilities employ the best technology from world leaders in SPC flooring manufacturing equipment. Our surfaces deliver the impact and the experience of pizzazz. The ridged core SPC floor's exhibit is one of its primary qualities on account of the state-of-the-art Patented interlocking technology made with the precision of German engineering. Securing the spaces with the multiple layered robust product composition. Our R&D facilities already have a foot firmly planted in tomorrow, so that we are technically empowered.

**HOMAG**

**leitz**

**UNILIN**  
FOR SMART LIVING



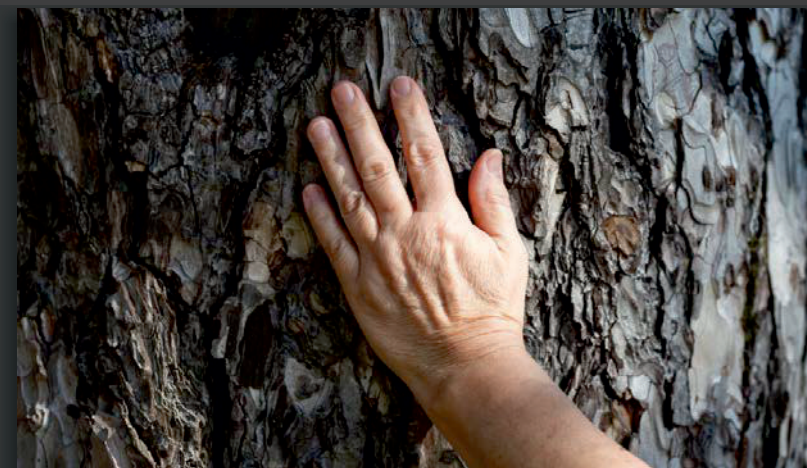


# NATURAL WOOD INSPIRATION

## BRING THE BEAUTY OF NATURE INDOORS WITH WOOD-LIKE SURFACES.

Natural wood inspiration can bring warmth and texture to any space. Whether it's a rustic cabin or a modern home, incorporating natural wood elements can create a cozy and inviting atmosphere. The versatility of wood allows for endless design possibilities that can be tailored to any personal style.

[www.keosurfaces.com](http://www.keosurfaces.com)





**KEO**<sup>®</sup>  
SURFACES

**LUXE**  
Series



## VERSATILE AND DURABLE SURFACE SOLUTIONS.

KEO surface solutions are designed to withstand fire and scratches while also being stain-resistant, easy to clean, and 100% waterproof. Additionally, they are environmentally friendly, as they can be recycled.

[www.keosurfaces.com](http://www.keosurfaces.com)



100%  
Waterproof



Patented Interlock  
System For  
Easy Installation



Real  
To Touch  
Texture



No Termite  
No Bugs



Excellent  
Acoustic



High  
Dimensional  
Stability



Scratch  
& Stain  
Resistant



Fire  
Retardant



Easy  
To Clean



Recyclable



Available Colors

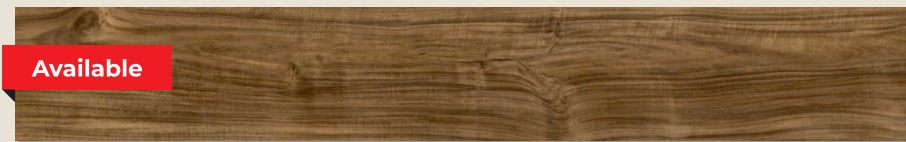


## THERE ARE INFINITE SURFACES IN THE MULTIVERSE.

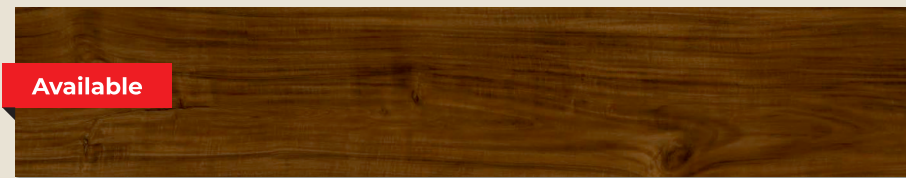
Rigid core flooring from Keo Surfaces, blends the beauty of wood with the sturdiness of stone. We provide an array of SPC Flooring alternatives to make your space distinctive. Despite being adaptable and durable, our flooring follows a methodology that takes into account specific placement and space constraints. Inspired by the true nature of Earthy hues and textures, each of these is inventively manufactured and has a unique characteristic which makes it perfect for a variety of applications.

## Size

181 X 1220 mm



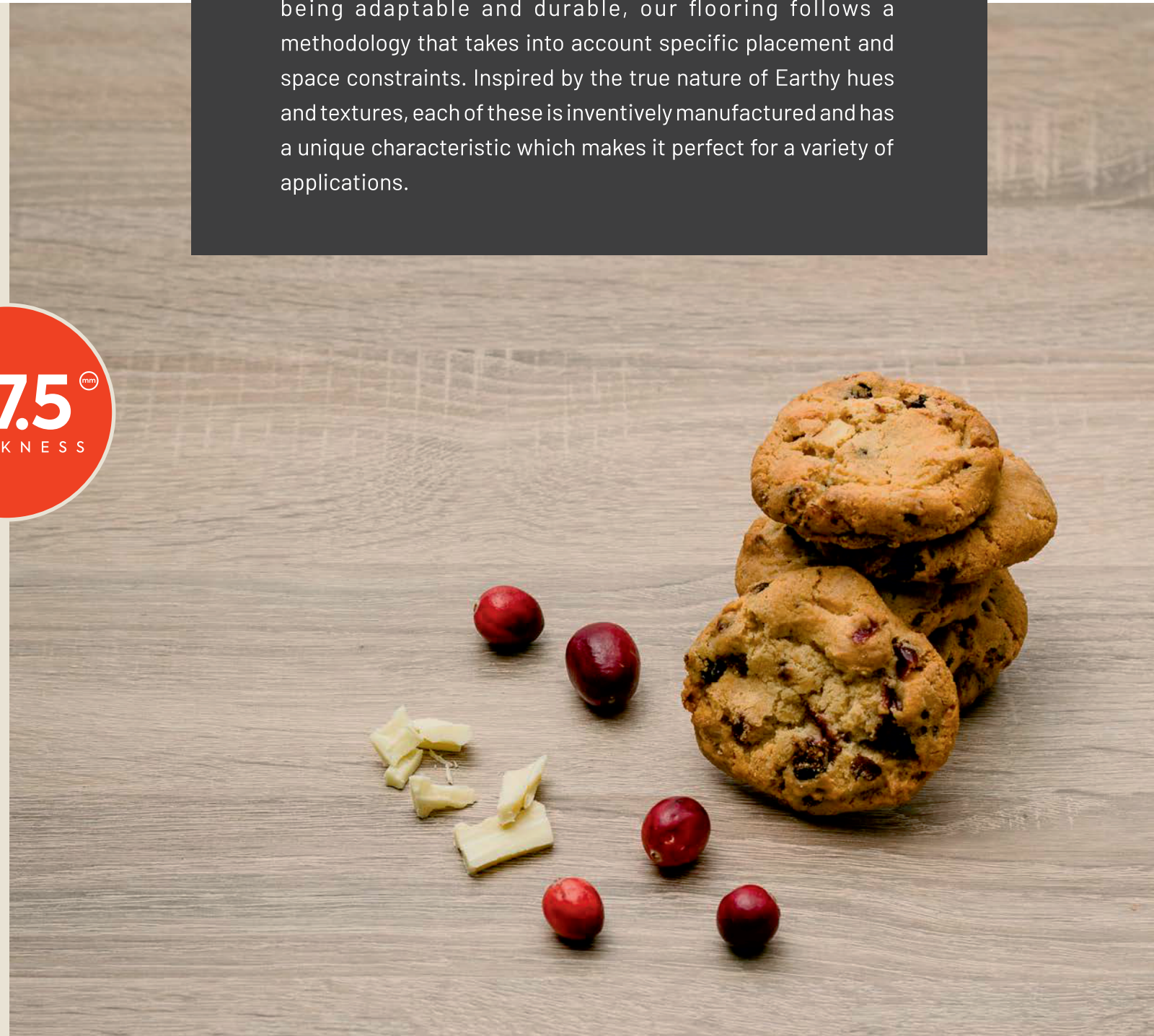
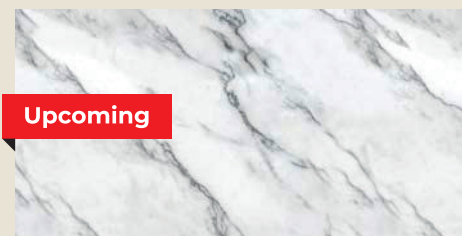
230 x 1220 mm



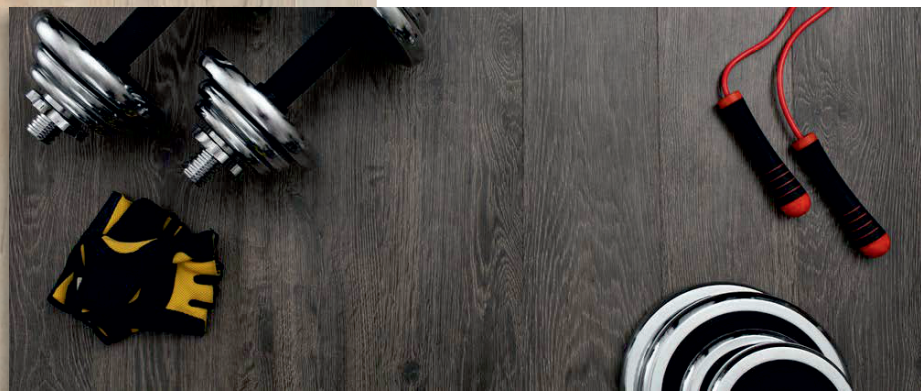
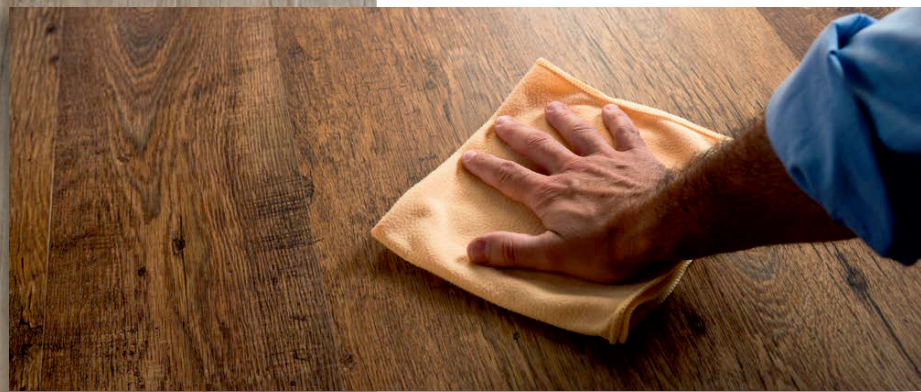
230 x 1524 mm



310 x 601 mm

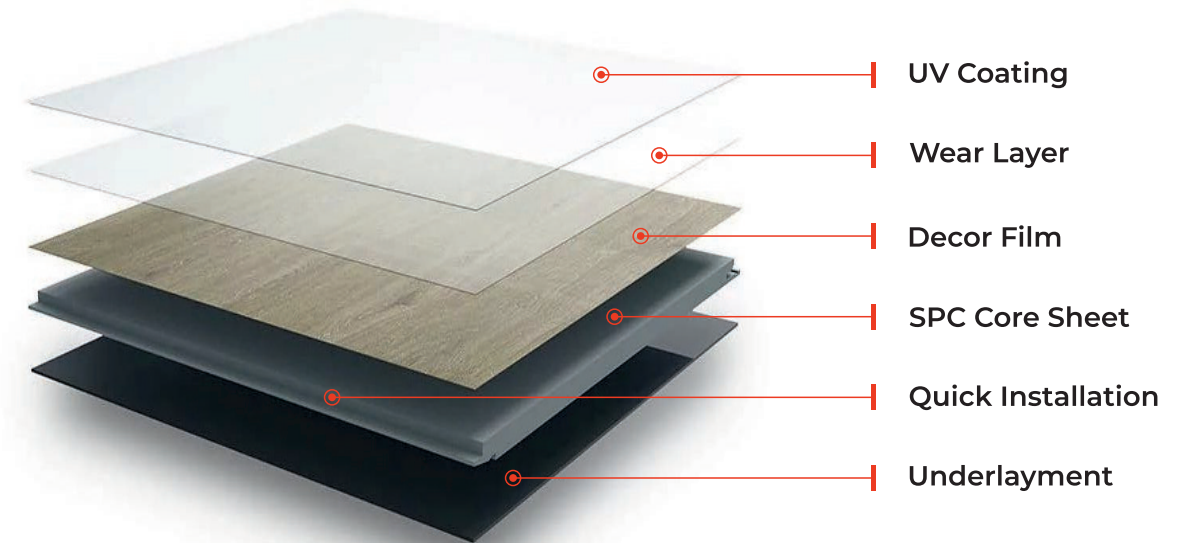






## PRODUCT COMPOSITION

Stone Polymer composite (SPC) also known as rigid core flooring features a core that comprises mainly of limestone & PVC which results in its adaptability & strength.





**KEO**<sup>®</sup>  
SURFACES

**LUXE** Series

PREMIUM



**NATURAL OAK**  
181x1220mm

[www.keosurfaces.com](http://www.keosurfaces.com)





**KEO**<sup>®</sup>  
SURFACES

**LUXE** Series

PREMIUM



**EUCALYPTUS**  
181x1220mm

[www.keosurfaces.com](http://www.keosurfaces.com)





**KEO**<sup>®</sup>  
SURFACES

**LUXE** Series

PREMIUM



**GOLD OAK**  
181x1220mm

[www.keosurfaces.com](http://www.keosurfaces.com)





**KEO**<sup>®</sup>  
SURFACES

**LUXE** Series



**ACACIA DARK**  
181x1220mm

[www.keosurfaces.com](http://www.keosurfaces.com)





**KEO**<sup>®</sup>  
SURFACES

**LUXE** Series



**ACACIA BROWN**  
181x1220mm

[www.keosurfaces.com](http://www.keosurfaces.com)





**KEO**<sup>®</sup>  
SURFACES

**LUXE** Series



**DARK PADAUK**  
181x1220mm

[www.keosurfaces.com](http://www.keosurfaces.com)





**KEO**<sup>®</sup>  
SURFACES

**LUXE** Series



**NATURAL WALNUT**  
181x1220mm

[www.keosurfaces.com](http://www.keosurfaces.com)





**KEO**<sup>®</sup>  
SURFACES

**LUXE** Series



**OAK ELEGANT**  
181x1220mm

[www.keosurfaces.com](http://www.keosurfaces.com)





**KEO**<sup>®</sup>  
SURFACES

**LUXE** Series



**VINTAGE OAK**  
181x1220mm

[www.keosurfaces.com](http://www.keosurfaces.com)





**KEO**<sup>®</sup>  
SURFACES

**LUXE** Series



**CLASSIC OAK**  
181x1220mm

[www.keosurfaces.com](http://www.keosurfaces.com)





**KEO**<sup>®</sup>  
SURFACES

**LUXE** Series



**WARM OAK**  
181x1220mm

[www.keosurfaces.com](http://www.keosurfaces.com)



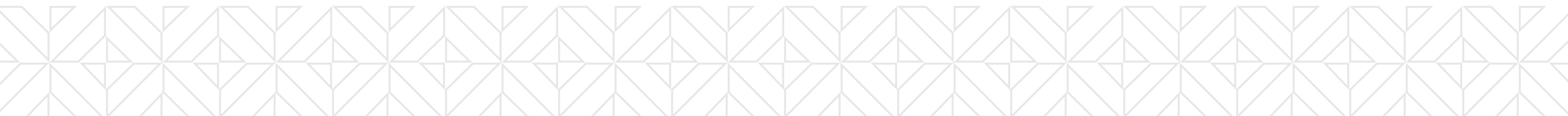


The technical specifications of SPC (Stone Polymer Composite) flooring are exceptional, combining endurance and creativity. Its strong core structure is made of a unique composite product which ensures exceptional dimensional stability. This material is resistant to water, scratches, stains and fire making it an excellent flooring alternative for a variety of conditions.

The presence of our state of art laboratory within our manufacturing facility demonstrates our commitment to quality. Every batch of manufacturing is extensively tested here in accordance with the industry standards. This careful process guarantees that each product meets our exacting quality standards, ensuring the dependability and performance of our offerings. We not only uphold the highest standards by maintaining our in-house testing lab, but we also provide our customers with the assurance of consistent and outstanding quality in every batch of SPC flooring we create.

### Technical Performances

Test Parameters	Standard	Specification / Criteria	Result
Dimension Stability	ISO 23999	< 0.10%	Pass
Curling	ISO 23999	< 1 mm	Pass
Micro scratch resistant	EN 16094	> 25000 Cycle (4N Load)	Pass
Residual Indentation	ACTME 1914	< 0.10mm	Pass
Shore D hardness	ASTM D 2240	> 15 to < 70 HD	Pass
Scratch Resistant		> 6 N	Pass
Abrasion Resistant	EN 13329	AC4 ( > 4000 cycle)	Pass
Pill strength	EN ISO 24345	> 50 N / 50 mm	Pass
Locking Strength	ISO 24334	> 250 N / 100 mm	Pass
Density	ASTM D 792	1.95 to 2.05 g/cm <sup>2</sup>	Pass
Castor Chair test	ISO 4918	25000 Cycle (90 kg load)	Pass
Large Ball Impact test	EN 438	1600 mm Height (320 gm load)	Pass







**Packing Detail**

**SIZE**

181 X 1220mm

**4+1**

(4mm core + 1mm ixpe)  
(27 Pallet 27 Ton)

**BOX**

10 pc Plank  
2.21 Sqm  
17.5 kg (approx)

**PALLET**

55 Box  
121.55 Sqm  
Gross 1003 Kg

**CONTAINER**

27 Pallet  
1485 Box  
3281.85 Sqm  
Gross 27067.5 Kg

**SIZE**

181 X 1220mm

**5+1**

(5mm core + 1mm ixpe)  
(27 Pallet 27 Ton)

**BOX**

8 pc Plank  
1.77 Sqm  
17.8 kg (approx)

**PALLET**

55 Box  
97.35 Sqm  
Gross 1019 Kg

**CONTAINER**

27 Pallet  
1485 Box  
2628.45 Sqm  
Gross 27513 Kg

